



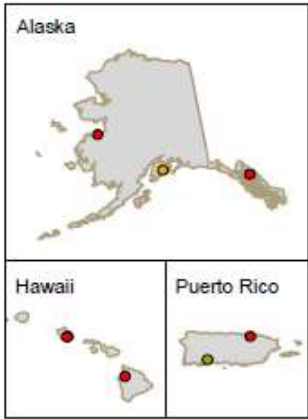
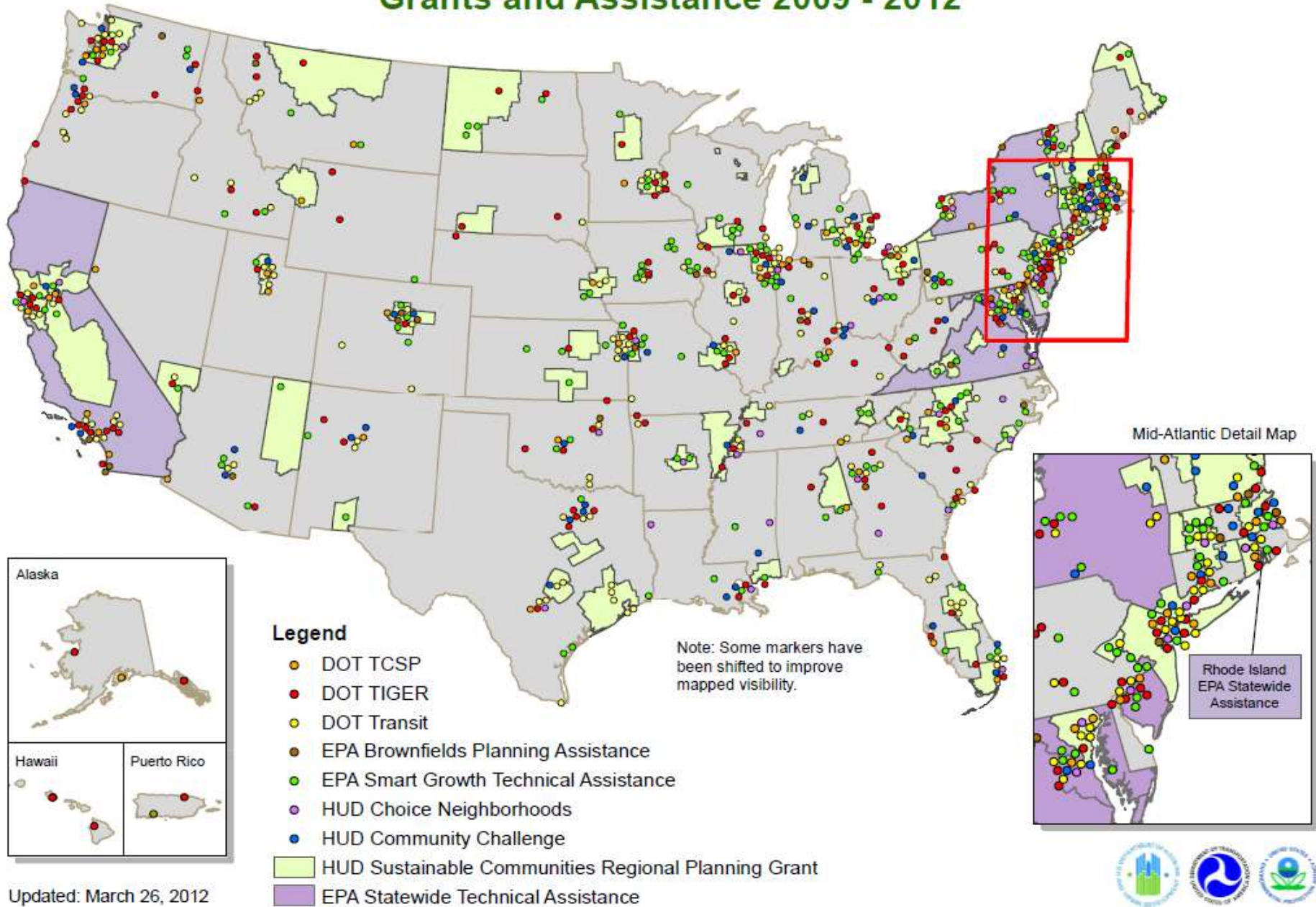
PIEDMONT
together

Community Choices. Regional Solutions.

From Checking the Box to an Equity Profile



HUD-DOT-EPA Partnership for Sustainable Communities Grants and Assistance 2009 - 2012



Updated: March 26, 2012





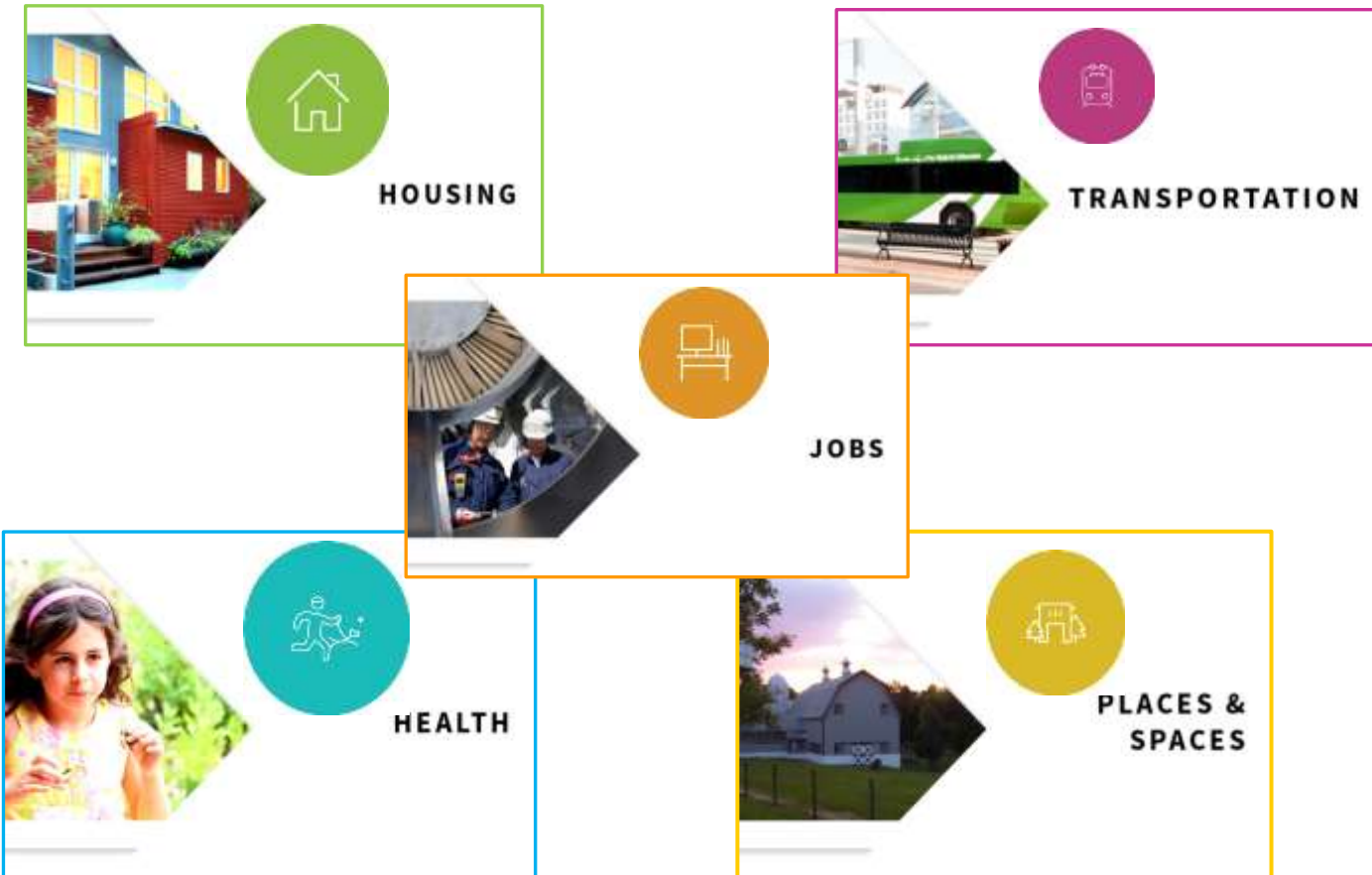
Community Choices. Regional Solutions.

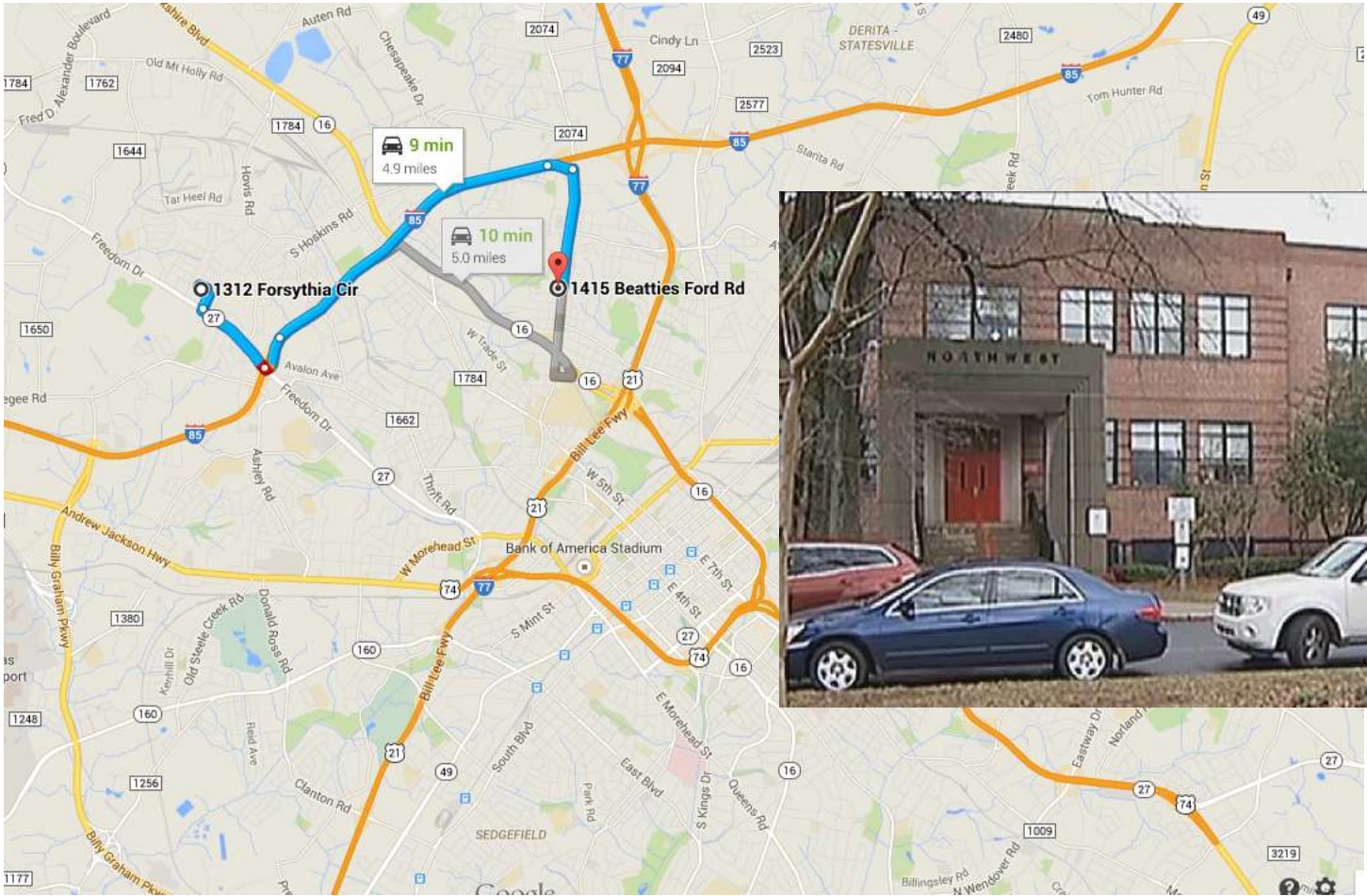
Piedmont Together is a comprehensive project designed to build a resilient, prosperous economy and a better quality of life for all of North Carolina's Piedmont Triad residents.

[What is Piedmont Together?](#)

Winner of the
2014 North Carolina Marvin Collins Outstanding Planning Special Theme
Award for Equitable Development

16 Goals....172 Objectives.... 259 Strategic Actions







BUILDING A RESILIENT ECONOMY: OPPORTUNITIES FOR EVERYONE



Equity

- “just and fair inclusion into a society, where ALL can participate and prosper”.
- Creating communities that provide equal access to opportunity.
- Requires intentionality.
- Connects people to opportunities and results in the development of opportunity rich, vibrant communities.
- Increases residents’ capacities to improve their quality of life, and contributes to building and sustaining a strong regional economy.

137 ACTIONS TIED TO EQUITY





© Lucle & Simon



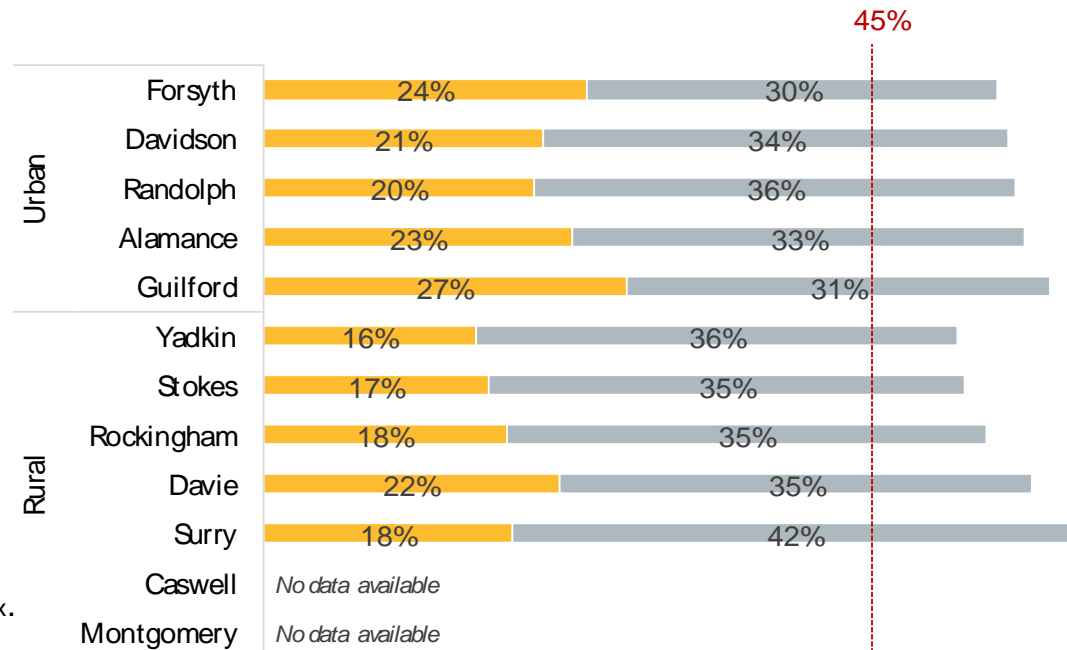
Access to good jobs

Do all residents earn enough to cover housing and transportation costs?

Regionwide, people are paying too much for housing and transportation. In all 12 counties, housing and transportation costs typically exceed 45 percent of household income, which is considered an affordability threshold. These expenses are highest in Surry County, at 60 percent of income.

Average Housing and Transportation Costs as a Percent of Household Income by County, 2009

■ Housing
■ Transportation



Source: Center for Neighborhood Technology, H+T Affordability Index.